

TUG
FRANCO P.



ILMA



Our land is the sea



MAIN FEATURES

FLAG AND CLASSIFICATION

• Flag	Italian
• Port of registry	Ancona
• N° of registry	781
• Call Sign	IFUR
• RINA N°	RI76732
• IMO N°	7625976
• Class RINA	100-A-11-NAV P; Re
• Service	Towing Operation

CONSTRUCTION

- 1975 at *Bollinger Machine Shop & Ship Yard Inc. Lockport – Louisiana U.S.A*

DIMENSIONS

• Length O.A	28.96 M
• Length B.P.	27.80 M
• Breadth Molded	8.53 M
• Depth	3.96 M
• GT	234
• NT	70

GENERATOR

- Two sets *Dlco A:C. Type 60 Hz 75 KVA driven by Detroit Diesel engines running at 1200 RPM*

PROPULSION

- Two sets *Caterpillar Tractor Co. Peoria Illinois, 12 Vee Formation, 4 stroke single acting developing 850 BHP each at 1225 RPM. Caterpillar Reversible Pneumatic Operated Gearbox driving a fixed pitch propeller.*

FIRE PUMP

- *Deming Pump capacity of 122 cubic meters/hr driven by Detroit Diesel engine.*

GENERAL SERVICE & BILGE PUMPS

- Two sets *Peabody Baarnes Type 1o CCE driven by electric motors Type 3 Phase 5 HP.*

AIR COMPRESSORS

Two sets *Quincy Type n° 325-13 Max speed 900 RPM*

DECK EQUIPMENT

- *Fore windlass hydraulic driven*
- *Aft Capstan electric driven*
- *Deck crane Husky Hydraulics Inc. 1 ton max*

TOWING WINCH

ALMON A. JOHNSON

- *Line pull 30 T*
- *Driven by a 6 cyl. Detroit Diesel engine*

ACCOMODATION

- *Fully air-conditioned.*
- *2 Single cabin for Captain & Chief engineer*
- *1 Double bed cabin & 1 four bed cabin for the crew*
- *Galley and dining room on main deck.*
- *Two bathrooms with shower and w.c.*

TANK CAPACITIES

• FUEL	95 cubic M
• FRESH WATER	54 cubic M
• BALLAST	160 cubic M

NAVIGATION EQUIPMENTS

- *Two magnetic compasses, Radar, Echo sounder, GPS Plotter, Two VHF sets, Radio SSB, Navtex Autoalarm receiver, Autopilot*

SPEED

- *10.5 Knots*

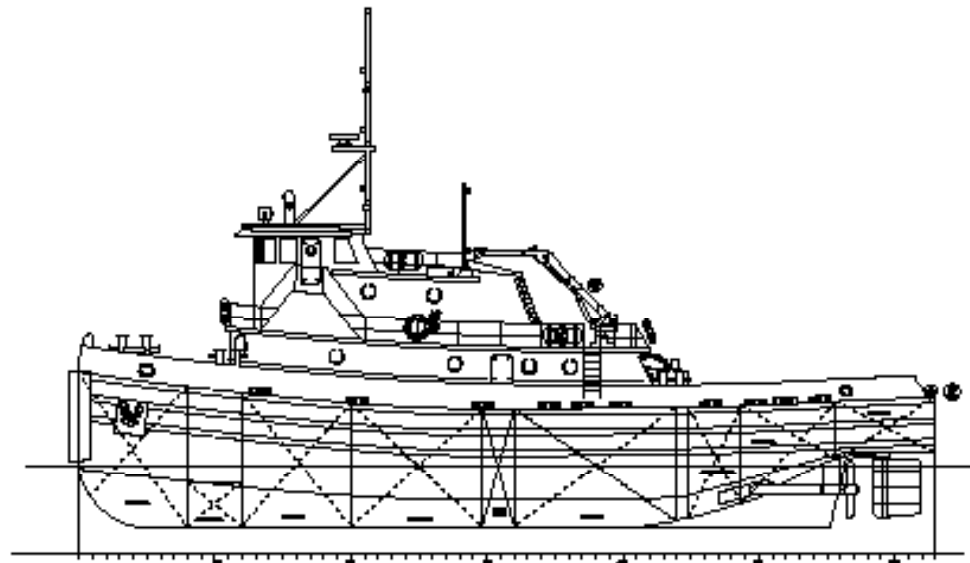
BOLLARD PULL

- *17 tons, 21 max*

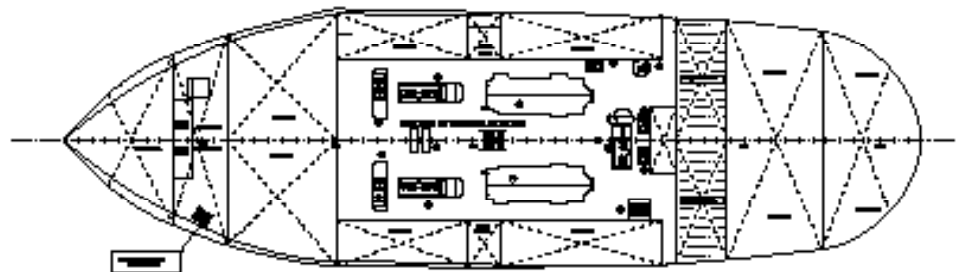
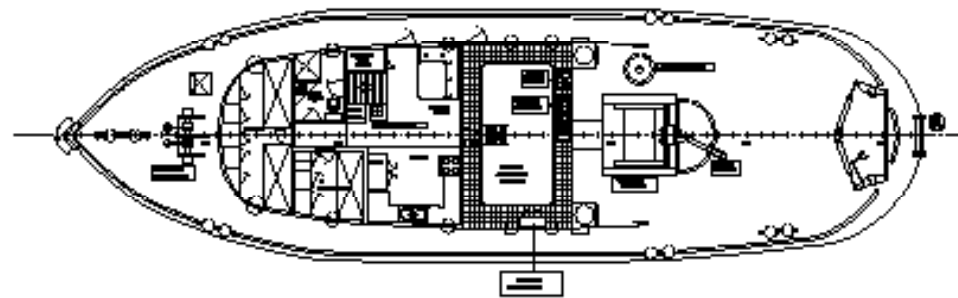
ANCHOR HANDLING

- *Stern fitted for anchor handling*

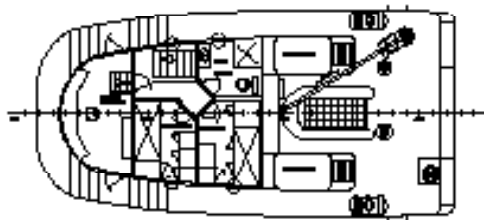
TUG FRANCO P.



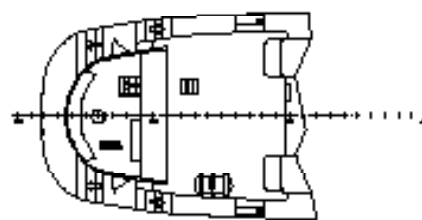
PONTE DI COPERTURA



PONTE ALLOGGI

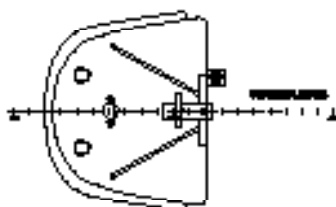


COPERTINO PONTE ALLOGGI

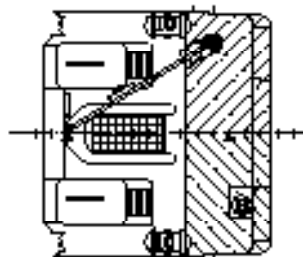


①	_____
②	_____
③	_____
④	_____
⑤	_____

CONTROPLANCIA



PONTE ALLOGGI



MATERIE PRIME (MATERIE)	
①	_____
②	_____
③	_____
④	_____
⑤	_____
⑥	_____
⑦	_____
⑧	_____
⑨	_____
⑩	_____

TUG FRANCO P.



TUG FRANCO P.





TUG FRANCO P.



TUG FRANCO P.





Impresa Lavori Marittimi Ancona I.L.M.A. S.r.l.

Head Office: Via Vanoni, 3
60125 Ancona - Italy
Tel. +39 071 20 19 08
Fax. +39 071 20 21 94
e-mail: info@ilmaoffshore.it

www.ilmaoffshore.it